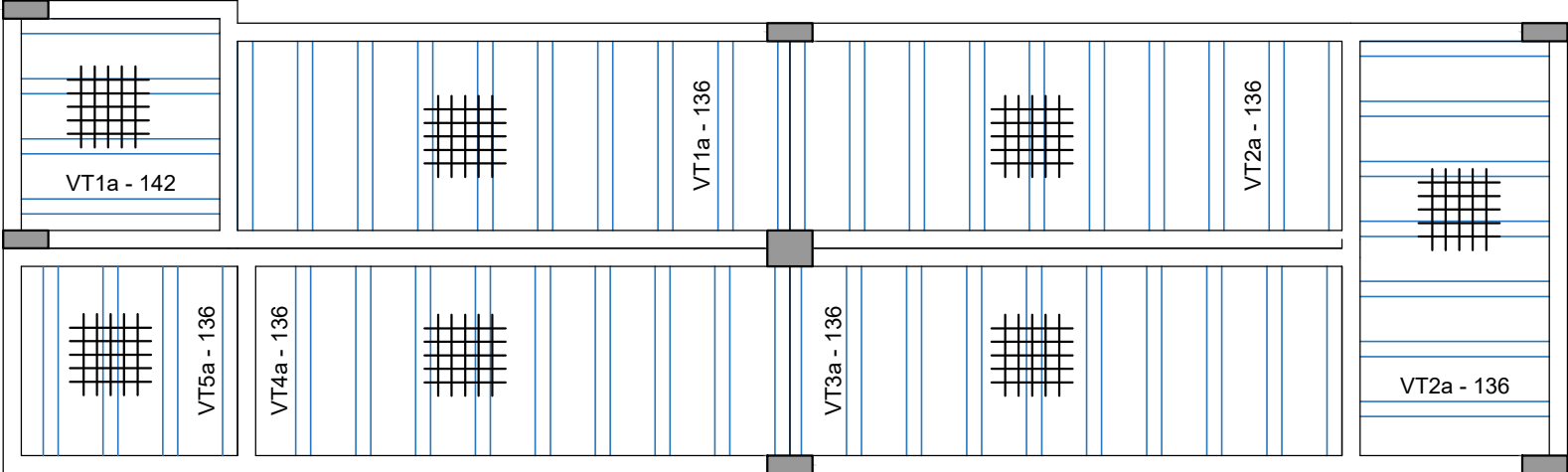
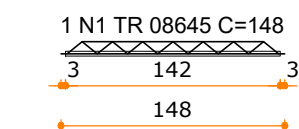


Planta de vigotas pré-moldadas

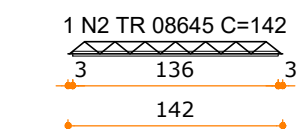
escala 1:50



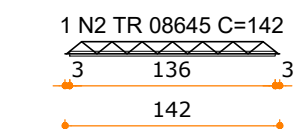
VT1a (4 unidades) (L1) ESC 1:50



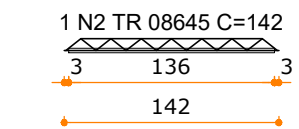
VT1a (8 unidades) (L2) ESC 1:50



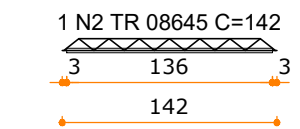
VT2a (7 unidades) (L2) ESC 1:50



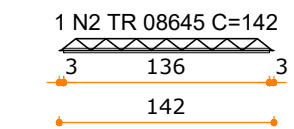
VT2a (8 unidades) (R2) ESC 1:50



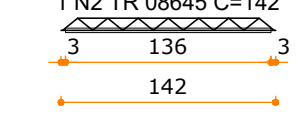
VT3a (9 unidades) (R3) ESC 1:50



VT4a (8 unidades) (R4) ESC 1:50



VT5a (4 unidades) (R4) ESC 1:50



DETALHES DAS LAJES - ESCALA.: 1/50

RELAÇÃO DO AÇO

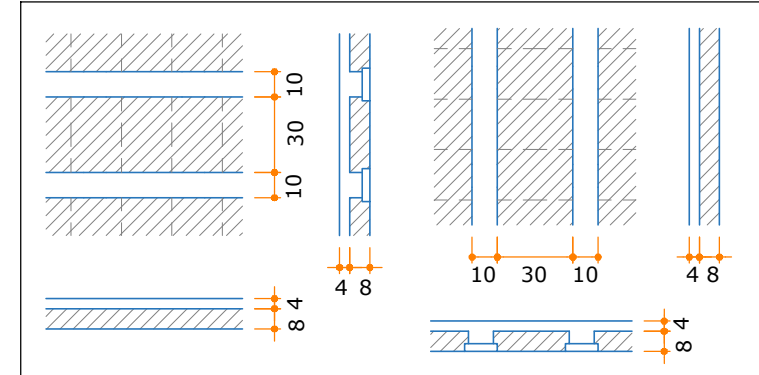
AÇO	N	DIAM (mm)	QUANT	C.UNIT (cm)	C.TOTAL (cm)
CA60	1	2	4	148	592
CA60	2	4	44	142	6248

RESUMO DO AÇO

AÇO	DIAM (mm)	C.TOTAL (m)	PESO + 0% (kg)
CA60	TR 08645	68.4	56.1
PESO TOTAL (kg)			
CA60	56.1		

Volume de concreto (C-30) = 1.37 m³
Área de forma = 0.00 m²

Detalhe das lajes treliçadas



Utilizar Tela Soldada Q92

NOTAS					
As especificações gerais de material, projeto e execução encontram-se na prancha 01 - Detalhes Gerais.					
Dimensões em centímetros, exceto quando indicado.					
RELAÇÃO DO AÇO					
AÇO	N	DIAM (mm)	QUANT	C.UNIT (cm)	C.TOTAL (cm)
CA60	1	5.0	311	75	23325
V1	2	5.0	17	138	2346
V4	3	5.0	2	138	276
V7	4	5.0	2	233	466
V10	5	5.0	2	258	516
V13	6	5.0	2	239	478
	7	5.0	2	234	468
	8	5.0	2	216	432
	9	8.0	4	159	636
	10	8.0	2	176	352
	11	8.0	2	184	368
	12	8.0	4	398	1592
	13	8.0	4	399	1596
	14	8.0	1	100	100
	15	8.0	2	160	320
	16	8.0	2	195	390
	17	8.0	2	199	398
	18	8.0	4	153	612
	19	8.0	2	311	622
	20	8.0	2	319	638
	21	8.0	4	401	1604
	22	8.0	1	108	108
	23	8.0	2	164	328
	24	8.0	4	387	1548
	25	10.0	2	198	396
	26	10.0	2	194	388
	27	10.0	2	179	358
	28	10.0	2	205	410
	29	10.0	1	136	136
	30	10.0	2	435	870
	31	10.0	1	144	144
	32	10.0	2	438	876
	33	10.0	1	135	135
	34	10.0	2	190	380
	35	10.0	1	182	182
	36	10.0	2	192	384
	37	10.0	1	149	149
	38	10.0	2	193	386
	39	10.0	2	314	628
	40	10.0	2	312	624
	41	10.0	1	136	136
	42	10.0	2	192	384
	43	10.0	1	127	127
	44	10.0	2	411	822
	45	10.0	1	134	134
	46	10.0	2	194	388

RESUMO DO AÇO				
AÇO	N	DIAM (mm)	C.TOTAL (m)	PESO + 0% (kg)
CA60	1	5.0	42	75
CA50	2	5.0	3	6.3
CA60	3	6.3	20	82
	4	8.0	4	171
	5	8.0	2	201
	6	8.0	2	195
	7	8.0	2	229
	8	8.0	1	197
	9	8.0	2	206
	10	8.0	2	161
	11	8.0	2	180
	12	10.0	3	176
	13	10.0	3	206

RESUMO DO AÇO				
AÇO	N	DIAM (mm)	C.TOTAL (m)	PESO + 0% (kg)
CA50	6.3	16.4	4	12.7
CA60	8.0	32.3	11.5	7.1
CA60	5.0	32.9	5.1	5.1

RESUMO DO AÇO				
AÇO	N	DIAM (mm)	C.TOTAL (m)	PESO + 0% (kg)
CA50	6.3	16.4	4	12.7
CA60	8.0	32.3	11.5	7.1
CA60	5.0	32.9	5.1	5.1

RESUMO DO AÇO				
AÇO	N	DIAM (mm)	C.TOTAL (m)	PESO + 0% (kg)
CA50	6.3	16.4	4	12.7
CA60	8.0	32.3	11.5	7.1
CA60	5.0	32.9	5.1	5.1

RESUMO DO AÇO				
AÇO	N	DIAM (mm)	C.TOTAL (m)	PESO + 0% (kg)
CA50	6.3	16.4	4	12.7
CA60	8.0	32.3	11.5	7.1
CA60	5.0	32.9	5.1	5.1

RESUMO DO AÇO				
AÇO	N	DIAM (mm)	C.TOTAL (m)	PESO + 0% (kg)
CA50	6.3	16.4	4	12.7
CA60	8.0	32.3	11.5	7.1
CA60	5.0	32.9	5.1	5.1

RESUMO DO AÇO				
AÇO	N	DIAM (mm)	C.TOTAL (m)	PESO + 0% (kg)
CA50	6.3	16.4	4	12.7
CA60	8.0	32.3	11.5	7.1
CA60	5.0	32.9	5.1	5.1

RESUMO DO AÇO				
AÇO	N	DIAM (mm)	C.TOTAL (m)	PESO + 0% (kg)
CA50	6.3	16.4	4	12.7
CA60	8.0	32.3	11.5	7.1
CA60	5.0	32.9	5.1	5.1

RESUMO DO AÇO				
AÇO	N	DIAM (mm)	C.TOTAL (m)	PESO + 0% (kg)
CA50	6.3	16.4	4	12.7
CA60	8.0	32.3	11.5	7.1
CA60	5.0	32.9	5.1	5.1

RESUMO DO AÇO				
AÇO	N	DIAM (mm)	C.TOTAL (m)	PESO + 0% (kg)
CA50	6.3	16.4	4	12.7
CA60	8.0	32.3	11.5	7.1
CA60	5.0	32.9	5.1	5.1

RESUMO DO AÇO				
AÇO	N	DIAM (mm)	C.TOTAL (m)	PESO + 0% (kg)
CA50	6.3	16.4	4	12.7
CA60	8.0	32.3	11.5	7.1
CA60	5.0	32.9	5.1	5.1

RESUMO DO AÇO				
AÇO	N	DIAM (mm)	C.TOTAL (m)	PESO + 0% (kg)
CA50	6.3	16.4	4	12.7
CA60	8.0	32.3	11.5	7.1
CA60	5.0	32.9	5.1	5.1

RESUMO DO AÇO				
AÇO	N	DIAM (mm)	C.TOTAL (m)	PESO + 0% (kg)
CA50	6.3	16.4	4	12.7
CA60	8.0	32.3	11.5	7.1
CA60	5.0	32.9	5.1	5.1

RESUMO DO AÇO				
AÇO	N	DIAM (mm)	C.TOTAL (m)	PESO + 0% (kg)
CA50	6.3	16.4	4	12.7
CA60	8.0	32.3	11.5	7.1
CA60	5.0	32.9	5.1	5.1

RESUMO DO AÇO				
AÇO	N	DIAM (mm)	C.TOTAL (m)	PESO + 0% (kg)
CA50	6.3	16.4	4	12.7
CA60	8.0	32.3	11.5	7.1
CA60	5.0	32.9	5.1	5.1

RESUMO DO AÇO				
AÇO	N	DIAM (mm)	C.TOTAL (m)	PESO + 0% (kg)
CA50	6.3	16.4	4	12.7
CA60	8.0	32.3	11.5	7.1
CA60	5.0	32.9	5.1	5.1

RESUMO DO AÇO				
AÇO	N	DIAM (mm)	C.TOTAL (m)	PESO + 0% (kg)
CA50	6.3	16.4	4	12.7
CA60	8.0	32.3	11.5	7.1
CA60	5.0	32.9	5.1	5.1

RESUMO DO AÇO				
AÇO	N	DIAM (mm)	C.TOTAL (m)	PESO + 0% (kg)
CA50	6.3	16.4	4	12.7
CA60	8.0	32.3	11.5	7.1
CA60	5.0	32.9	5.1	5.1

RESUMO DO AÇO				
AÇO	N	DIAM (mm)	C.TOTAL (m)	PESO + 0% (kg)
CA50	6.3	16.4	4	12.7
CA60	8.0	32.3	11.5	7.1
CA60	5.0	32.9	5.1	5.1

RESUMO DO AÇO				
AÇO	N	DIAM (mm)	C.TOTAL (m)	PESO + 0% (kg)
CA50	6.3	16.4	4	12.7
CA60	8.0	32.3	11.5	7.1
CA60	5.0	32.9	5.1	5.1

RESUMO DO AÇO				
AÇO	N	DIAM (mm)	C.TOTAL (m)	PESO + 0% (kg)
CA50	6.3	16.4	4	12.7
CA60	8.0	32.3	11.5	7.1
CA60	5.0	32.9	5.1	5.1

RESUMO DO AÇO				
AÇO	N	DIAM (mm)	C.TOTAL (m)	PESO + 0% (kg)
CA50	6.3	16.4	4	12.7
CA60	8.0	32.3	11.5	7.1
CA60	5.0	32.9	5.1	5.1

RESUMO DO AÇO				
AÇO	N	DIAM (mm)	C.TOTAL (m)	PESO + 0% (kg)
CA50	6.3	16.4	4	12.7
CA60	8.0	32.3	11.5	7.1
CA60	5.0	32.9	5.1	5.1

RESUMO DO AÇO				
AÇO	N	DIAM (mm)	C.TOTAL (m)	PESO + 0% (kg)
CA50	6.3	16.4	4	12.7
CA60	8.0	32.3	11.5	7.1
CA60	5.0	32.9	5.1	5.1

RESUMO DO AÇO				
AÇO	N	DIAM (mm)	C.TOTAL (m)	PESO + 0% (kg)
CA50	6.3	16.4	4	12.7
CA60	8.0	32.3	11.5	7.1
CA60	5.0	32.9	5.1	5.1

RESUMO DO AÇO				
AÇO	N	DIAM (mm)	C.TOTAL (m)	PESO + 0% (kg)
CA50	6.3	16.4	4	12.7
CA60	8.0	32.3	11.5	7.1
CA60	5.0	32.9	5.1	5.1

RESUMO DO AÇO				
AÇO	N	DIAM (mm)	C.TOTAL (m)	PESO + 0% (kg)
CA50	6.3	16.4	4	12.7
CA60	8.0	32.3	11.5	7.1
CA60	5.0	32.9	5.1	5.1

RESUMO DO AÇO				
AÇO	N	DIAM (mm)	C.TOTAL (m)	PESO + 0% (kg)
CA50	6.3	16.4	4	12.7
CA60	8.0	32.3	11.5	7.1
CA60	5.0	32.9	5.1	5.1

RESUMO DO AÇO				
AÇO	N	DIAM (mm)	C.TOTAL (m)	PESO + 0% (kg)
CA50	6.3	16.4	4	12.7
CA60	8.0	32.3	11.5	7.1
CA60	5.0	32.9	5.1	5.1

RESUMO DO AÇO				
AÇO	N	DIAM (mm)	C.TOTAL (m)	PESO + 0% (kg)
CA50	6.3	16.4	4	12.7
CA60	8.0	32.3	11.5	7.1
CA60	5.0	32.9	5.1	5.1

RESUMO DO AÇO				
AÇO	N	DIAM (mm)	C.TOTAL (m)	PESO + 0% (kg)
CA50	6.3	16.4	4	12.7
CA60	8.0	32.3	11.5	7.1
CA60	5.0	32.9	5.1	5.1

RESUMO
